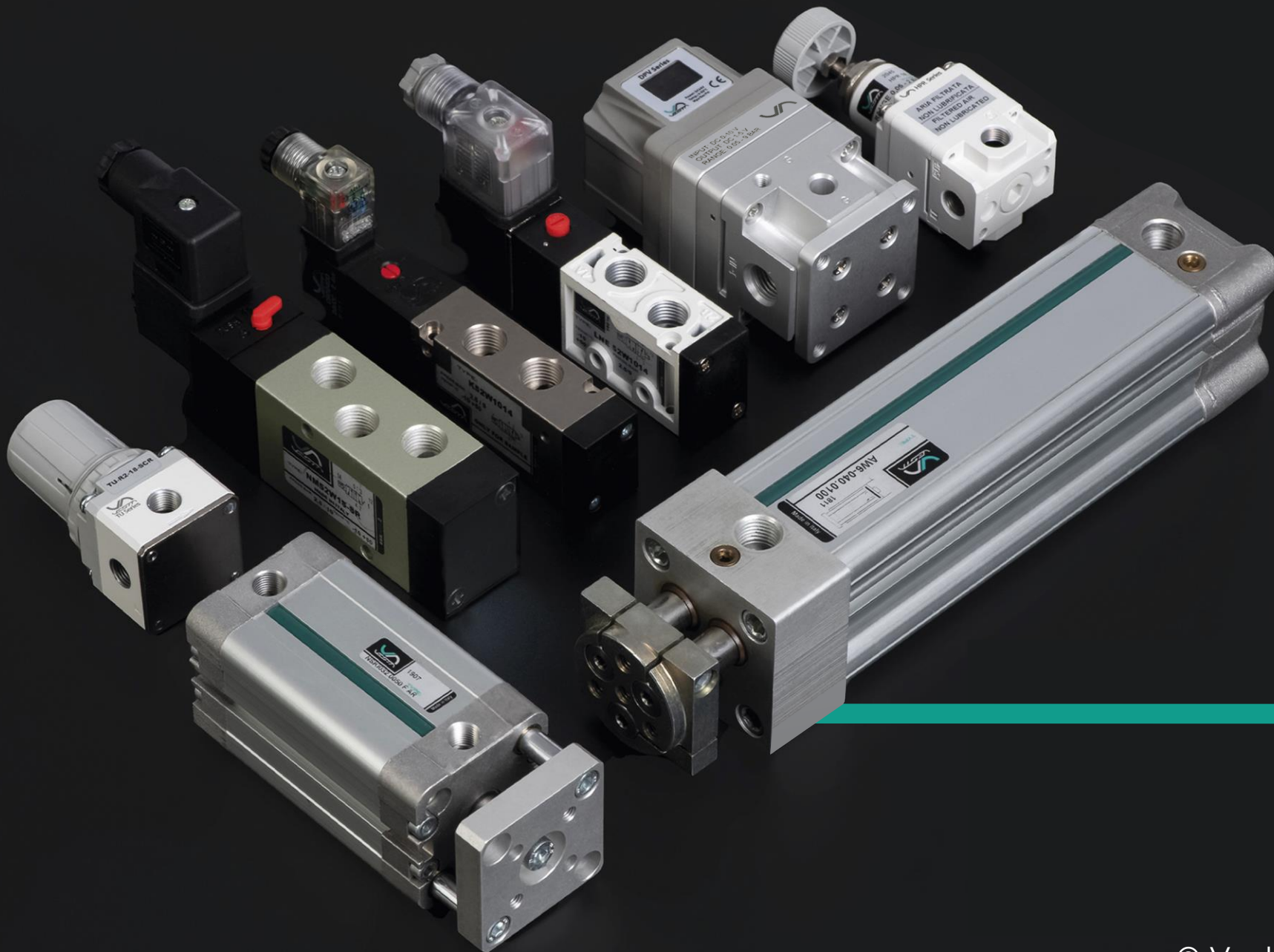


ENG 



Production Range 2023



35 years of international expertise
in **the main fields** of automation





Since 1984, **pneumatic solutions** for a range of different industries in over **60 markets worldwide**



PACKAGING
& LOGISTICS



FOOD &
BEVERAGE



BIOMEDICAL
& PHARMA



PROCESS
INDUSTRIES



WOOD, GLASS
& ABRASIVES



VACUUM &
MANIPULATION



AUTOMOTIVE
& TRUCKS



RAILWAYS
& RIDES



TEXTILE &
PRINTING



WELDING &
SIDERURGICAL

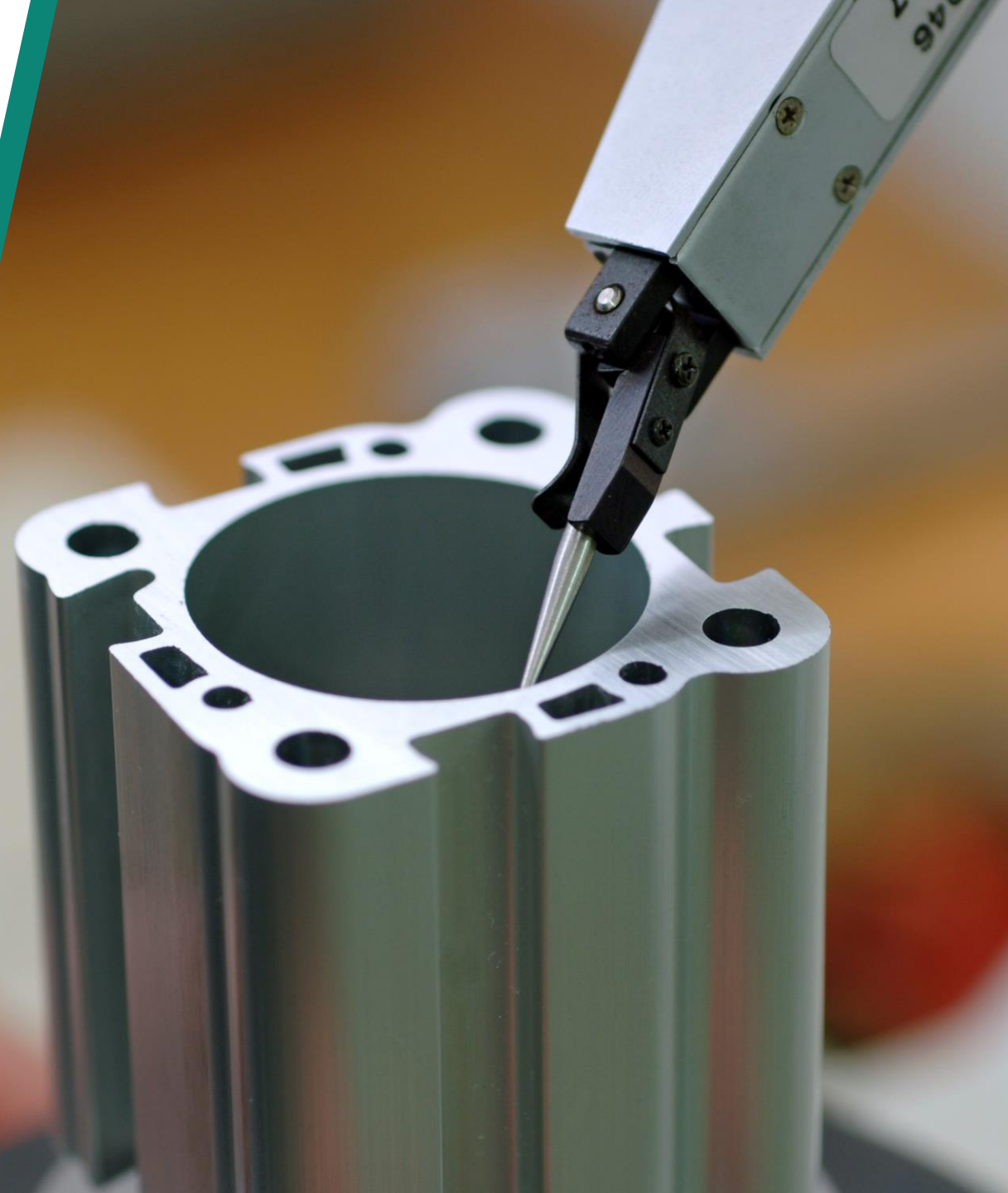


**ALWAYS
COMMITTED
TO QUALITY**

UNI EN ISO 9001
compliant since 1996
100% of products tested



MADE IN ITALY





THE RANGE

CYLINDERS

Pneumatic actuators & grippers

page 6



VALVES

Pneumatic valves & solenoid valves

page 18



AIR TREATMENT

FRL units & precision regulators

page 30



FITTINGS

Fittings, flow regulators, silencers & vacuum

page 37





CYLINDERS

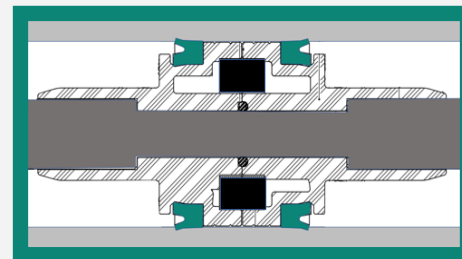
Over 40 million cylinders produced since 1984

PTFE-graphite-bronze
long bushing guide



Lapped/rolled
stainless steel rods

Polyurethane
(PUR) lip seals
for all series



CYLINDERS

RANGE MAP

LINKS:

 CYLINDERS CATALOG

 GRIPPERS CATALOG

 ISO 3D STEP FILES



CLICK HERE



ISO STANDARD PNEUMATIC CYLINDERS

page 9



GUIDED & NON-ROTATION PNEUMATIC ACTUATORS

page 13



ACTUATORS WITH SPECIAL FUNCTIONS

page 15



CYLINDERS FOR AGGRESSIVE AND EXPLOSIVE ENVIRONMENTS

page 16



PNEUMATIC GRIPPERS

page 17





ISO 6432 ROUND CYLINDERS

Seals replacement kit
available (also FKM)



DVM / **ACM**

ø12, 16, 20, 25

ISO 6432 screwed-head (openable) magnetic cylinders

3D STEP FILES



ATEX II 3GD VERSION



Available with non-
rotation hexagonal rod



DLM/ALM

ø08, 10, 12, 16, 20, 25

ISO 6432 crimped-head magnetic cylinders



DVMT/ACMT

ø32, 40, 50

Round magnetic cylinders

MAGNETIC SWITCHES



ISO 6432 ACCESSORIES





ISO CYLINDERS 15552



Assembly kits available



Polyurethane lip seals,
stainless steel rods



Assembly kits available



NWT 

ø32, 40, 50, 63, 80, 100, 125

ISO 15552 cylinders for heavy applications

3D STEP FILES



ATEX II 3GD VERSION



LNT 

ø32, 40, 50, 63, 80, 100, 125

ISO 15552 standard magnetic cylinders

MAGNETIC SWITCHES



ISO 15552 ACCESSORIES





BIG-SIZE ISO 15552 CYLINDERS

FKM seals
available
for all sizes



XJN 

ø160, 200, 250, 320

ISO 15552 cushioned magnetic cylinders





ISO 21287 / UNITOP & COMPACT CYLINDERS



Polyurethane
double lip seals



Multi-standard (ISO/UNI)
assembly kits available



NSK I/U



ø16, 20, 25, 32, 40, 50, 63, 80, 100

ISO 21287 & UNITOP compact cylinders

3D STEP FILES



ATEX II 3GD VERSION



SH



ø125, 160, 200

Big size compact magnetic cylinders



CZ



ø6, 10, 16

Cartridge micro cylinders

MAGNETIC SWITCHES








ISO 21287 ACCESSORIES





ISO CYLINDERS STANDARD CONVERSION CHART

		FESTO	SMC	PARKER	NORGREN	ASCO/NUMATICS
 ISO 6432	DVM/DLM ACM/ALM	DSNU (double act.) ESNU (single act.)	C85	P1A	RM8000	Series 435
 ISO 15552	NWT LNT XJN	DSBG DSBC DSBF	CP95 CP96	P1D (discontinued) P1F	PRA802000	Series 450 Series 453
 ISO 21287 & UNITOP	NSK-I NSK-U 	ADN (double act.) AEN (single act.) ADVU (UNITOP double) AEVU (UNITOP single)	C55	P1P	RA192000	Series 499

GUIDED & NON-ROTATION ACTUATORS

GLH 

ø20, 25, 32, 40, 50, 63, 80, 100

ISO 15552/6432 compliant linear control units

HNG 

ø16, 20, 25, 32, 40, 50, 63

Compact guide non-rotation cylinders

PS/HPSK 

ø16, 20, 25, 32

Pneumatic dual holed-rod slides

NCV63 

ø63

Flat non-rotation pneumatic cylinders



2/3/4-tandem
available

MAGNETIC SWITCHES





Non-rotation cylinders
within ISO dimensions



AR/AW2-3-4

ø25, 32, 40, 50, 63, 80, 100

Cylinders with non-rotation twin rods



AW6-8

ø32, 40, 50, 63

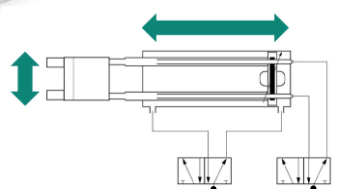
Cylinders with non-rotation triple rods



AW1-5-7

ø32, 40, 50, 63

Cylinders with holed telescopic rods



Through-rod
fluid control



ACTUATORS WITH SPECIAL FUNCTIONS

Extra-strong locking
3x cylinder force



RW/DC 

ø32, 40, 50, 63, 80, 100

Cylinders with pneumatic rod braking device

CRW 

ø25, 32, 40, 50, 63, 80, 100

Rotary actuators (male/female, 90°/180°/360°)

Precision angle
Regulation option



RLF/TM 

ø16, 20, 25, 32, 40, 50, 63

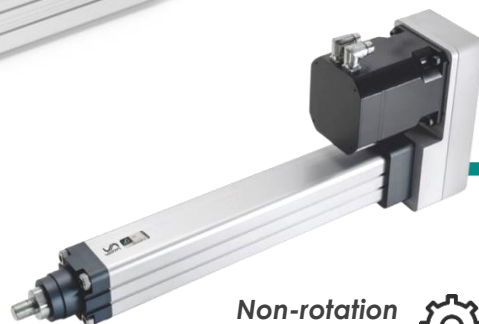
Rodless cylinders (band and magnetic)



ESNL 

ø32, 40, 50, 63, 80 (100, 125)

ISO 15552 electrical actuators (parallel/linear)



Non-rotation
special piston



MAGNETIC SWITCHES





CYLINDERS FOR FOOD & HARSH ENVIRONMENT

Heads in certified
FDA/food polymer



Food grade seals available



XJS  **DSA** 

ø32, 40, 50, 63, 80, 100

ISO 15552/6432 cylinders in FDA compliant polymer

XJSS  **DSM** 

ø32, 40, 50, 63, 80, 100

ISO 15552/6432 AISI304/316 stainless steel cylinders



RSSC 

ø32, 40, 50, 63

Stainless steel cylinders for the food industry



Inspectionable heads

MAGNETIC SWITCHES



ISO Cylinders
ATEX II 3GD



PNEUMATIC GRIPPERS



NGA 

ø10, 12, 16, 20, 25, 32

Angular 30° grippers (single/double acting)



Ball-bearing
guiding system

NGP 

ø10, 16, 20, 25

Parallel grippers (single/double acting)



NGT 

ø12, 16, 20, 25

180° grippers

NEW

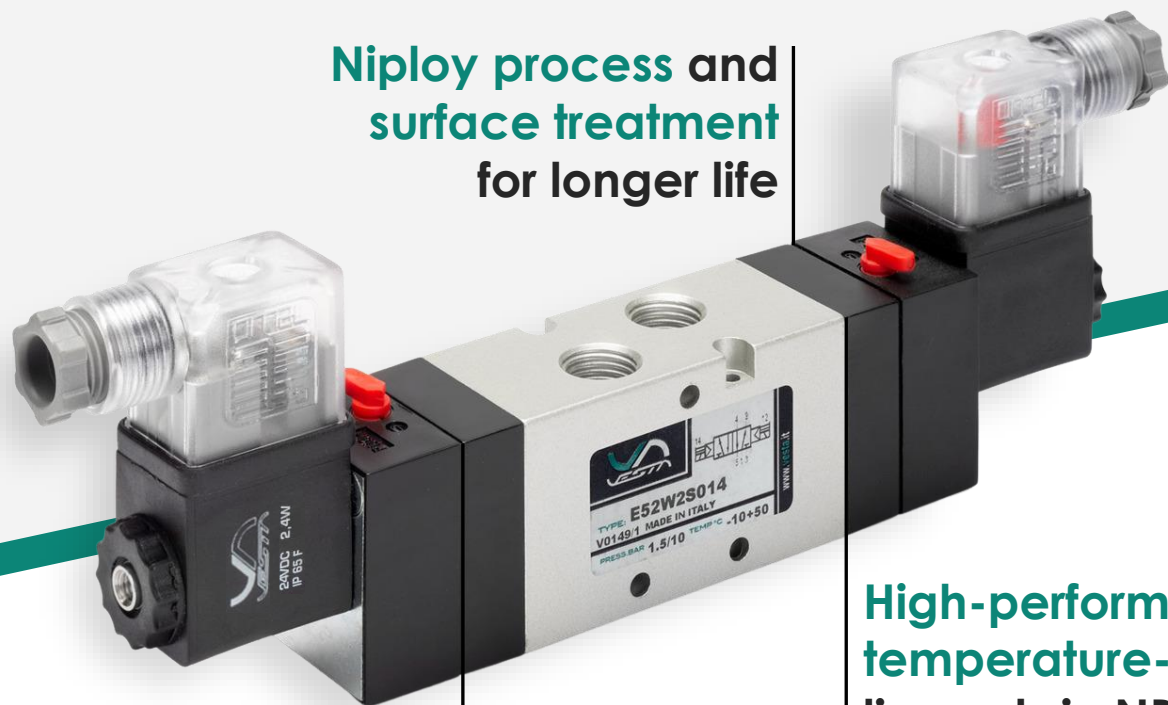
MAGNETIC SWITCHES





VALVES

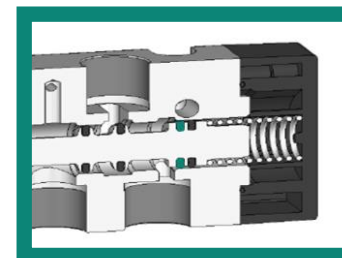
34.5 million valves produced since 1989



Niploy process and
surface treatment
for longer life

Optimized spaces
for **high-flow**

High-performance
temperature-resistant
lip seals in NBR or FKM



VALVES

RANGE MAP

LINKS:

 VALVES CATALOG 

 3D STEP FILES 

 EWJ TRAILER 

3/2, 5/2, 5/3 VALVES & SOLENOID VALVES

page 20



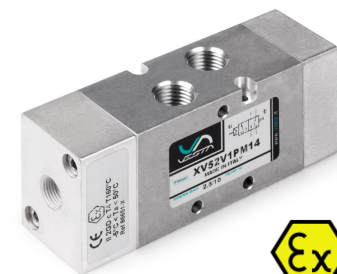
NAMUR & ISO VALVES & SOLENOID VALVES

page 21



ATEX VALVES & SOLENOID VALVES

page 22



EWJ PLUG-IN VALVE ISLAND

page 23



HIGH-FLOW 3/2 POPPET VALVES

page 24



DIRECT ACTING 3/2 OPERATORS

page 25



MECHANICAL & MANUAL VALVES

page 26





VALVES & SOLENOID VALVES (3/2, 5/2, 5/3)



High & low temperature seals
available for sizes 1/4" & 1/2"



ATEX II 3GD
compliant



E SERIES (since 1989)



22mm coil - G1/8", 1/4", 1/2"

Temperature & dust resistant lip seals valves



Flow rate G1/4"
1,400 NL/min



K SERIES



17mm coil - G1/8", 1/4", 1/2"

High-flow & quick-exchange mini valves



LNE SERIES



22mm coil - G1/8", 1/4", 3/8", 1/2"

Light die-cast body lip seals valves





NAMUR VALVES & ISO VALVES



ATEX II 3GD
compliant



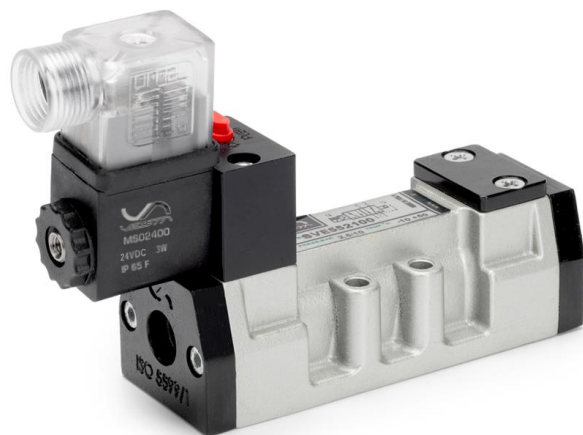
High & low temperature
seals available for NAMUR



NM SERIES

22mm coil - NAMUR (1/4")

Namur valves and solenoid valves



SVE/SVP SERIES

ISO 1, ISO 2

ISO1 & ISO2 valves and solenoid valves

ISO manifolds
available



COILS AND CONNECTORS





ATEX II 2GD VALVES



ATEX II 2GD
compliant



Internal stainless steel parts
and Alodine treatment

ATEX SERIES

G1/4", 1/2", NAMUR

ATEX II 2GD valves, solenoid valves & Namur





MULTIPOLE CONNECTION MANIFOLDS

Innovative system for
coils configuration



Assembly kits available



EWJ VALVE ISLAND



Tube Ø6 (1/8")

Self-configuration modular plug-in valve terminal



MPV



(on request)

G1/8", 1/4"

Integrated electrical connection manifold





HIGH-FLOW 3/2 POPPET VALVES



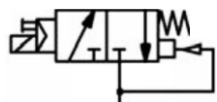
Flow rate 6.000
to 60.000 NL/min



PV32

G1/2", 3/4", 1", 1½", 2"

3/2 high-flow poppet valves for air & vacuum



Vacuum with
servo-vacuum
available





DIRECT ACTING 3/2 OPERATORS



Modular bodies for quick assembly



QBE 

G1/8"

3/2 direct acting solenoid valves

CWJ-15 

15mm

3/2 micro operators 15mm (manifold available)



CWJ-10 

10mm

3/2 micro operators 10mm (manifold available)



Fast switching
times up to 30Hz



MANUAL VALVES



High flow version (G1/2")
available on request

VCML 

G1/8", 1/4"

Manual lever valves

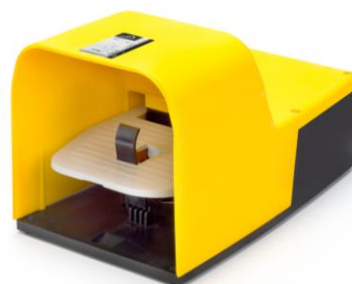
Pneumatic safety return
available for size 1/8"



VCMT 

G1/8", 1/4"

Manual button valves



VFP 

G1/4"

Foot pedal valves

MECHANICAL VALVES



VCMS 

G1/8", 1/4"

Cam actuated mechanical valves



VCLL 

G1/8"

Lateral roller-lever mechanical valves



VCLR 

G1/8"

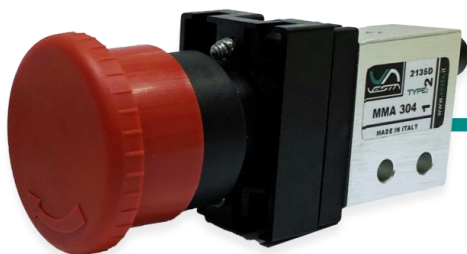
Roller-lever valves (AISI 304 lever option)

Food grade (AISI 304)
components available





MANUAL & MECHANICAL MICRO VALVES



MPGI/MPF/MSR

Push-in Tube Ø4, M5

Manual button/switch micro valves



MMA

Push-in Tube Ø4, M5

Cam actuated mechanical micro valves



MMR/MMS

Push-in Tube Ø4, M5

Roller lever mechanical micro valves

Available NC/NO,
5/2 and M5 ports



PNEUMATIC LOGIC ELEMENTS

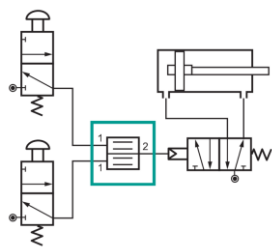


AND/OR/YES/NOT

Push-in Tube Ø4

Logic elements for pneumatic control

Two-hand safety valve



SBI

Push-in Tube Ø4

Two-hand safety valves



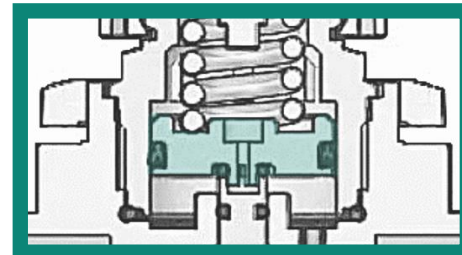
AIR TREATMENT UNITS



All series with
aluminium body
for **high-resistance**

From 1/8" **precision regulation**
up to 2" **high-flow elements**

Polyurethane pistons
with NBR lip seals for
stable regulation



AIR TREATMENT

RANGE MAP

LINKS:

 FRL UNITS CATALOG

 FRL 3D STEP FILES

 TU SERIES INTRO



PRESSURE REGULATORS

page 32



MODULAR LINES (FRL)

page 33



HIGH-FLOW & HIGH-PRESSURE & BOOSTERS

page 34



HIGH-PRECISION REGULATORS

page 35



PROPORTIONAL VALVES

page 35



PRESSURE REGULATORS

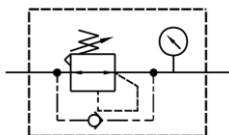


TU-R2

G1/8", 1/4"

Pressure microregulators (with backflow option)

Regulators available
With backflow option



TU-R3/4/5

G1/4", 3/8", 1/2", 3/4", 1"

Pressure regulators (with backflow option)



INOX-OX (on request)

G1/4"

Oxygen microregulators (NSF materials)

FRL UNITS – MODULAR LINES



TU-F, R, L, VM, VS SIZE 2

G1/4"

F-R-L units, 3/2 on-off valve, slow start + shutoff valve



TU-F, R, L, VM, VS SIZE 3

G1/4", 3/8", 1/2"

F-R-L units, 3/2 on-off valve, slow start + shutoff valve



Filtering from
40 to 0,01 µm



FRL UNITS – MODULAR LINES



TU-F, R, L, VM, VS SIZE 4

G1/2"

F-R-L units, 3/2 on-off valve, slow start + shutoff valve



Metal bowl option
Available for all sizes



TU-F, R, L, VM SIZE 5

G3/4", 1"

F-R-L units, 3/2 on-off valve



HIGH-FLOW, HIGH-PRESSURE & BOOSTERS



0-15 bar regulation,
20 bar resistance

TU-F, R, L SIZE 4H

G1/2"

High-pressure regulators & FRL elements (0-15 bar)



Flow rate up to
50,000 NL/min



TU-F, R, L SIZE 6/7

G1 1/2", 2"

High-flow filters & regulators



PBR

ø40, 63, 100

Pressure boosters (1:2, 1:3, 1:4)

HIGH-PRECISION REGULATORS



 **0.2% F.S.
precision**

HPR SERIES

G1/8", 1/4", 1/2"

High-precision manual pressure regulators



**Flow rate G1/2"
5,000 NL/min**



DPV SERIES


**OPERATION
MANUAL** 

G1/8", 1/4", 1/2"

Proportional valves with electric control



DPS SERIES

**OPERATION
MANUAL** 

G1/8"

Digital pressure switches (positive and vacuum)

**Output 1-5V,
4-20mA & PNP**



FITTINGS

 RANGE MAP

LINKS:



FITTINGS CATALOG



QUICK PUSH-IN FITTINGS & MINI FITTINGS

page 38



BRASS FITTINGS

page 38



STAINLESS STEEL FITTINGS

page 38



CONTROL VALVES

page 38



FLOW REGULATORS

page 39



SILENCERS

page 39



FITTINGS WITH VACUUM GENERATOR

page 39



FITTINGS & MINI FITTINGS



QF 

G1/8", 1/4", 3/8", 1/2"

Quick push-in fittings



QM 

M3, M5, M6

Quick push-in mini fittings



QB 

G1/8", 1/4", 3/8", 1/2"

Brass push-in fittings



QX 

G1/8", 1/4", 3/8", 1/2"

Stainless steel push-in fittings



QV 

G1/8", 1/4", 3/8", 1/2"

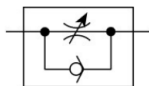
Control valves



FLOW REGULATORS, SILENCERS, VACUUM



Precision control
high flow capacity



VRF 

G1/8", 1/4", 3/8", 1/2"

Precision speed controllers



QR 

G1/8", 1/4", 3/8", 1/2"

Push-in speed controllers



QS 

G1/8", 1/4", 3/8", 1/2"

Silencers & exhaust control silencers

Vacuum pressure
up to -0.91 bar



VQ 

G1/8", 1/4", 3/8", 1/2"

Fittings with vacuum generators



Custom pneumatic
cylinders and valves
for **hard environments**,
with **special functions**
or for different fluids.

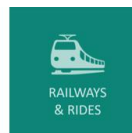
Ask us for more: info@vesta.it



VACUUM &
MANIPULATION



AUTOMOTIVE
& TRUCKS



RAILWAYS
& RIDES



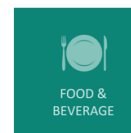
TEXTILE &
PRINTING



WELDING &
SIDERURGICAL



PACKAGING
& LOGISTICS



FOOD &
BEVERAGE



BIOMEDICAL
& PHARMA



PROCESS
INDUSTRIES



WOOD, GLASS
& ABRASIVES



Didactic panel
pneumatic or electronic



Online training



Vesta Automation S.r.l.

Via Martiri di Belfiore 69/A

45100 Rovigo – Italy

Tel. +39 0425 474838

E-mail: info@vesta.it

Website: www.vesta.it

 @gruppovesta

  Vesta Automation Srl

